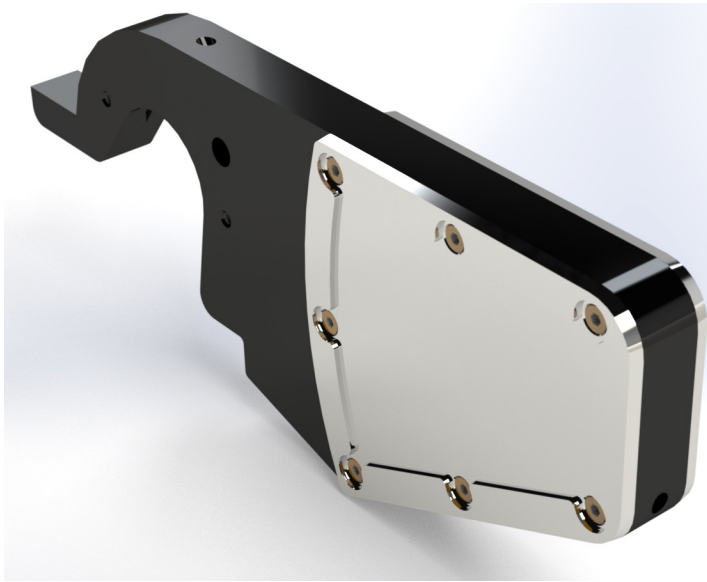




Circular & Band Saw Guides

Round Saw Guides



Williams and White specialises in Manufacturing industry leading Steel & Aluminum saw guides. We provide the engineering, manufacturing and quality control to provide you with a product that is second to none. Accurate saw guides will increase lumber recovery, resulting in maximized profits for your mill.

Key Features

- ✓ CNC machined
- ✓ Extreme precision (+ / - .00025")
- ✓ Super fine surface finishing
- ✓ Engineered hardcoat (type 3) anodizing
- ✓ Professional resurfacing and resizing
- ✓ Engineered to meet your requirements
- ✓ Guaranteed flatness

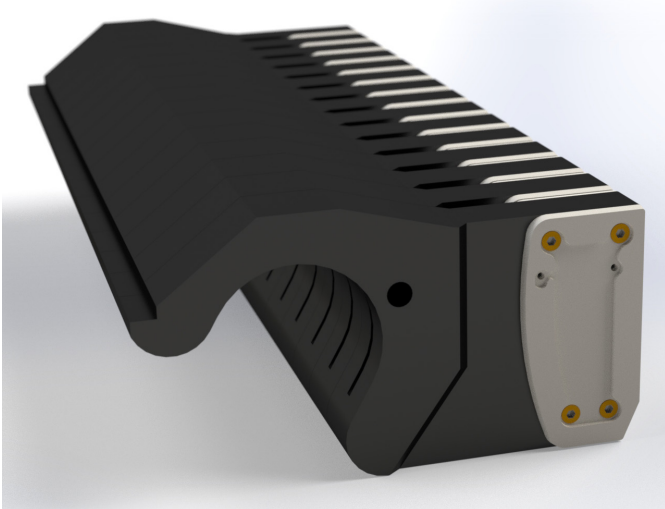
Quality Assurance

- ✓ Multiple inspection stages.
- ✓ Engineered drawings
- ✓ Guide engraving
- ✓ Every guide catalogued and filed on record
- ✓ Williams and White quality assured

Saw Guide Repair

- ✓ Damaged guide repair
- ✓ Guide re-anodizing
- ✓ Guide resizing (approximately half the cost of purchasing new guides)
- ✓ Guide straightening

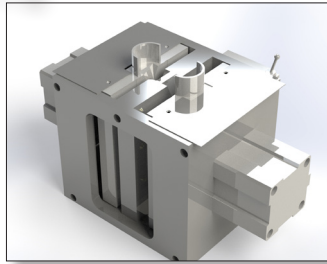
Options



- ✓ **Heli-coil inserts or thread inserts:** Offer extra protection against thread damage
- ✓ **Platinum series guides:** spacers
- ✓ **Nitriding available for steel guides**
- ✓ **Aluminium guides**
- ✓ **Steel guides**

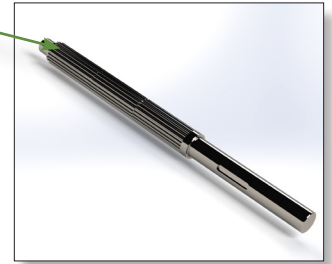
Babbitt mould

- + Custom designed mould chamber
- + Double pocket mould
- + Pneumatic operation
- + Optimizing babbitt design can improve sawing
- + Latest babbitt pad technology



Spline and arbors

- + Manufactured to precision tolerances
- + Induction hardened
- + Alloy steel
- + OEM replacements

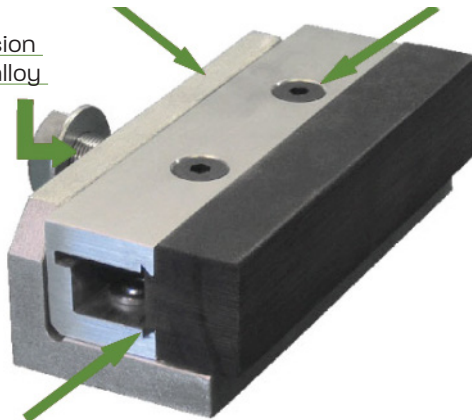


Band Saw Guides

Lightweight aluminum alloy cartridges with steel inserts are standard on most sizes

A quick turn of the key locks the insert into the adaptor

Lightweight precision made aluminium alloy Norguide adaptor



The dovetail inserts slides into the adaptor block quickly and easily

Our A series band saw guides range in size from 6" – 15" wide. The guide blocks are 2" in height and are 1 5/8" deep. These guides can be resurfaced approximately 40 times. The A series has the option of an internally ducted top mounting bracket with a dual wide angle spray system

