



# Saw Working Tools

## Circle saw leveling station

- + Easy height adjustable bench with hydraulic cylinder
- + Replaceable UHMW work surfaces
- + (2) 24" LED lights behind diffused screen
- + Standard slab sizes up to 30" - larger slabs available upon request
- + Slabs available in both mild steel and WW Nichrome Options



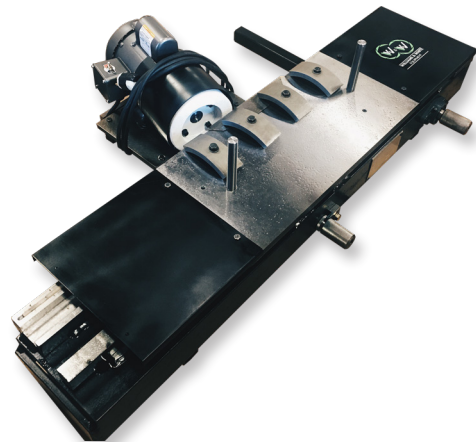
## Leveling & hammering anvils

- + Precision ground
- + Anvils re-conditioning service available
- + All sizes of band or circular anvils available
- + Hard hammering pyramid anvils
- + Lazy susan type turntables and floor stands



## Tension gauge grinder

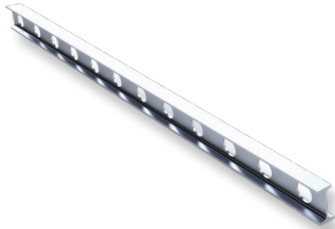
- + 18" (457mm) and 24" (609mm) models available
- + 0-20' (0-6,096mm) radii
- + Heavy duty design
- + Manual operation
- + Grinds: Tension Gauges & Straight edges
- + Precision machined ways
- + Lubricated ways





**Aluminum I-Beam straight edges**

- + Aluminum construction
- + Light weight
- + Up to 20' in length
- + Two working surfaces
- + Excellent for line bar adjustment 0.001" / foot accuracy



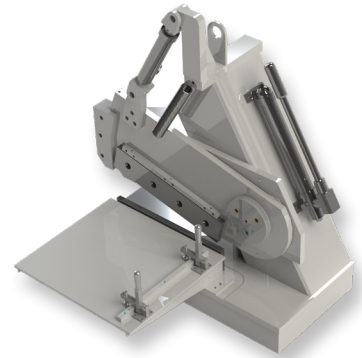
**Saw filing hammers**

- + All types and weights of hammers
- + Cross face / dog head / twist face / combination
- + Precision balanced



**Bandsaw shear**

- + Hydraulic actuation
- + Replaceable shears
- + Super heavy duty



For a complete list of all of our saw working tools visit our website

**Consumables & accessories**

**Oil and water coolant**

- + 970 NCL - Water Based coolant for Carbide Grinding
- + 971 Coolant - Water Based non-carbide grinding fluid
- + 972 Oil - Oil Based grinding fluid



**Grinding wheels**

- + Supplier of all grinding wheels for circular and band saw grinders
- + PCD and CBN super abrasives
- + Standard abrasives available



**Rolls - dies & regrinds**

- + Only supplier of Thru-hardened rolls for all types of stretcher rolls (ie Williams and White, Armstrong, Hanchett, Vollmer, Iseli, Simonds)
- + Precision regrind service for all brands
- + Conversion kits available for Dish-O-Matic (DOM 1 & 2)

